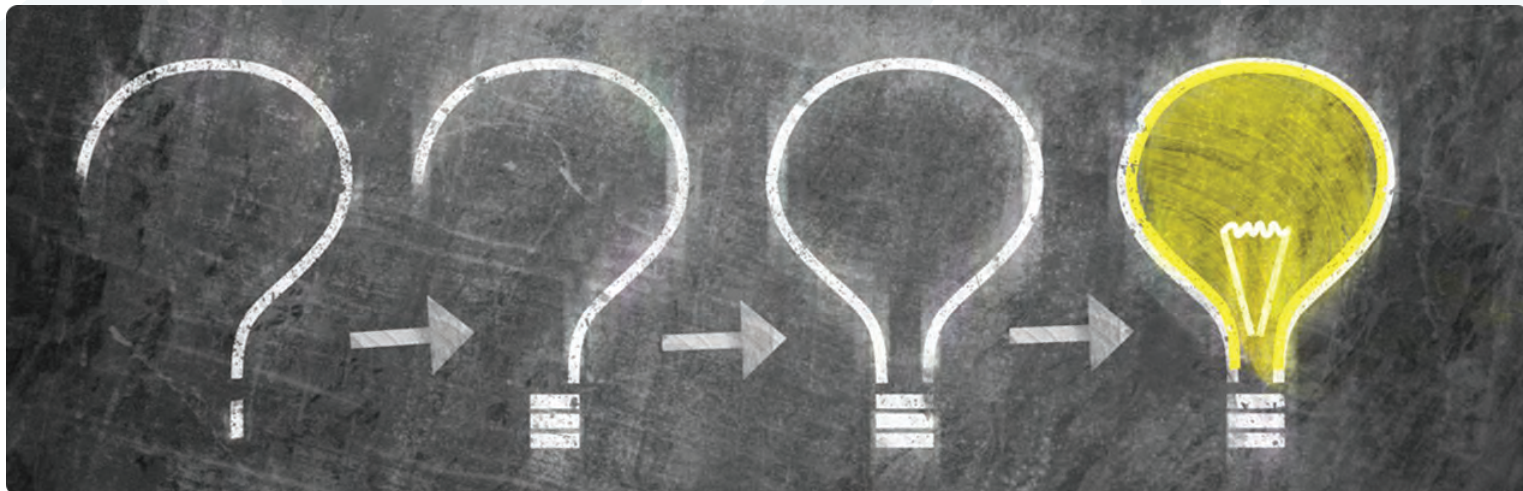


# PSI delines

February 2017



## What do you do with an Idea?

A few months ago, I had the pleasure of walking into a REAL bookstore. I know, I know...crazy. While looking through the children's section with my girls, I stumbled across this amazing book, "What do you do with an IDEA?"

The premise of the book is just that simple and amazing: What do I do with my idea?

More importantly, what do I do with "an idea that's different, daring, or just a little wild?"

"Do you hide it? Walk away from it? Do you pretend it isn't yours?"

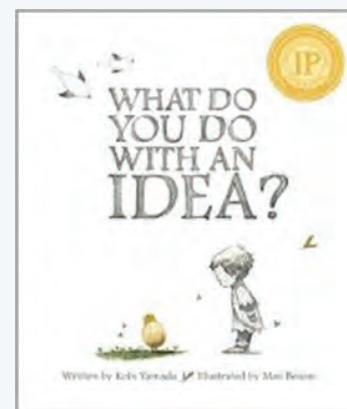
"This is the story of one brilliant idea and the child who helps to bring it into the world. As the child's confidence grows, so does the idea itself. And then, one day, something amazing happens."

"This is a story for anyone, at any age, who's ever had an idea that seemed a little too big, too odd, too difficult. It's a story to inspire you to welcome that idea, to give it some space to grow, and to see what happens next. Because your idea isn't going anywhere. In fact, it's just getting started."

All of us can be the child in this book. All of us can encourage the children we interact with each day to be the child in this book. Everything we have now started with just an idea. The computer I am typing on, the screen you are reading this newsletter from, the pen you are using to write down your inspiring idea, and the school building you are sitting in right now.

The book ends fantastically, "And then, I realized what you do with an idea...You change the world".

I would say PSI was one such idea. An idea that started 40 years ago with a few psychology students at a local university and a professor who wanted to change the world for children in schools. The idea was probably scary, probably a little daring, and probably a little different at the time. These individuals believed in the idea, worked hard at the idea, and now, 40 years later, close to 400 schools and over 100,000 children reached, the close to 1,000 PSI staff are changing the world, one day at a time.



~ From the Desk of Colleen Lorber, Ph.D. Executive Director of Client Services

## PSIdelines, February 2017

A newsletter for the professional staff of PSI published periodically throughout the year.

### Mission Statement

PSI is the market leader in high-quality educational and health services to schools. We strive in everything we do to gain the trust of our clients and to meet or exceed their expectations for quality, value, and responsiveness.

### Vision Statement

PSI is The Trusted Provider of High-Quality Educational and Health Services to Schools. Together, we create the foundation that supports all students to learn, thrive, and grow.

### Educational Support Services

Julie Wood, Ph.D.

Manager of Educational Support Services

Linda Grimm, Ed.S.

Regional Support Supervisor

Bob Murray, Ed.S.

Coordinator of School Psychology

Karen Heichel, M.A.

Supervisor of Psychology

Christine Worthington, M.A., CCC-SLP

Supervisor of Speech/Language Pathology

Anita Michael, M.A., CCC-SLP

Supervisor of Speech /Language Pathology

Robin Caston, M.A.

Manager: Jon Peterson/Autism Scholarships

Kay Almy, M.A.T.

Manager of ESL & Foreign Language Services

Kelly Wetula, BS.Ed.

Supervisor of Education Specialists

Beth Bendokaitis, BS.Ed.

Supervisor of Education Specialists

### Health Services

Meredith Sitko, B.Ed., CHES, RN, NCSN

Director of Client Services

Lynn Chrostowski, NCSN, RN, MSN

Director of Staff and Clinic Services

Debbie Osysko, RN

Manager of Client Services

Barb Taylor-Ross, RN

Manager of Staff and Clinic Services

Laura Sheeks, RN

Manager of Staff and Clinic Services

Paula Harris, RN, CNN, CHPN

Manager of Special Needs Services

Dave Lince, B.A.

Regional Coordinator-ESS and Health

Mike Tornow, MA, P.C.C.

PSI Coordinator of School Partnerships

### Prevention/Intervention & Professional Development

Karen McKelvey, Ed.S.

Director

### Administration

Steven L. Rosenberg, Ph.D.

President and CEO

Colleen Lorber, Ph.D.

Executive Director of Client Services

Nancy Musci

Executive Director of Operations & Admin.

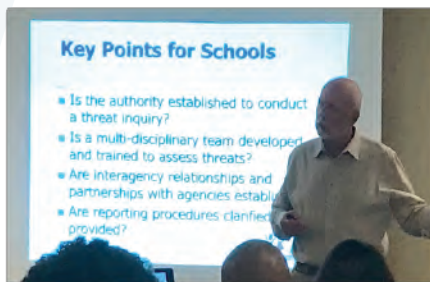
# from the desk of... Karen McKelvey

## Professional Development News

If you are planning on renewing your ODE license via an application utilizing the PSI Local Professional Development Committee (LPDC), **the deadline for completed Individual Professional Development Plans (IPDP) is February 28, 2017**. For an application packet and instructions, please contact me at [karenmckelvey@psi-solutions.org](mailto:karenmckelvey@psi-solutions.org).

## PSI Workshops

- Health Staff Spring Meeting: Thursday, April 6, 2017. Additional information will be coming soon, but mark your calendars now!
- On February 9, 2017, Scott Poland, EdD provided training to Cambridge School staff on the topic of school crisis preparedness. Dr. Poland is one of PSI's expert partners and nationally recognized in his roles as Founding Member of the National Emergency Assistance Team and Co-Director of the Suicide and Violence Prevention Office at Nova Southeastern University. Cambridge staff found the workshop very useful.



*Dr. Scott Poland presenting on Suicide and Violence Prevention*

## The Word of Webinars!

PSI is committed to an ongoing series of webinars, utilizing its connections with state and national experts on a variety of topics. PSI's latest webinar took place on Feb. 22 by examining the important issue of Human Trafficking.

**Webinar**

### Human Trafficking: Is it Affecting YOUR Students?

Presented by: The Collaborative to End Human Trafficking  
Ruthmary Powers, HM, PhD, Education Specialist

Wednesday  
Feb. 22, 2017  
3:00 - 4:00 PM  
EST

A certificate for one contact hour will be given to participants upon completion of the seminar and an evaluation.

*Did you miss this webinar? Don't worry!*

*Click this link to view our Human Trafficking Webinar:*

<http://ow.ly/7Qft309j7oG>

This webinar was open to all PSI employees and provided one contact hour upon completion of the webinar and a survey.

# from the desk of...

# Karen McKelvey

February 2017

## Webinars already completed this school year:

### Quick, Formative and Valid Reading Assessments

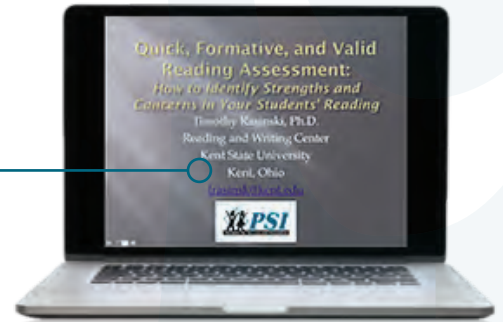
Presented by Dr. Tim Rasinski, on "How to Identify Strengths and Concerns in Your Students' Reading"

Presented on October 19, 2016

Watch Now..... <http://ow.ly/h5D5309epeL>

Survey..... <http://ow.ly/wUuu309epAS>

Powerpoint..... <http://ow.ly/DdCN309epKK>



### Managing Concussions in Our Schools

Presented by Dr. Susan Davies, Associate Professor at The University of Dayton and Dr. Colleen Lorber, Executive Director at PSI

Presented on September 21, 2016

Watch Now..... <http://ow.ly/PxRV309eqjb>

Survey..... <http://ow.ly/Uesg309eqnt>

Powerpoint..... <http://ow.ly/Y9UX309equy>



### Get Credits By Taking Our Surveys!

Download the survey and complete for credit. Please email to:

[tammylyman@psi-solutons.org](mailto:tammylyman@psi-solutons.org).

As you are reading this after the live versions, you can still participate in these and other webinars at: <http://www.psi-solutions.org/webinar-library/>.

Check your email for announcements of upcoming webinars!

### Opiate Task Force

As we all know, opiate addiction is running rampant. There will be a webinar in April on this topic.

For information on resources and help, check this website: <http://ow.ly/jKSA309es5h>

# from the desk of...

# Karen McKelvey

February 2017

## And More...

PSICertify is PSI's evolving Professional Development initiative. By aligning more closely all departments within PSI, we are able to offer required trainings to our partner schools.

Follow this link for a description and class listings that have been developed thus far:

<http://psi-solutions.org/certificationservices/>

A recently added PSICertify program is based on a new ODE mandate:

## NEW LEGISLATION FOR 2017-2018!

Sub. H.B. 113:  
CPR and AED Instruction  
& Staff Training



**New Curriculum Requirement for Students  
& New Training Mandate for Staff...**

**PSI has you covered!**

*Beginning with the 2017-2018 school year:*

- All students in grades 9-12 attending public schools must receive instruction in Cardiopulmonary Resuscitation (CPR) and the use of an Automated External Defibrillator (AED) before graduating from high school.
- Each school district and community school is required to provide training in the use of an AED to all employees.

Let PSI join your teaching team as a guest speaker to meet this requirement for your students and invite us to your next professional development day to meet this requirement for your staff!

Contact Meredith Sitko for more information - [meredithsitko@psi-solutions.org](mailto:meredithsitko@psi-solutions.org)



Please mention this new PSI Resource to your School Administrators!

from the desk of...

# Karen McKelvey

February 2017

## IMPORTANT REMINDER

**Safety and Violence Prevention Training (under ODE mandates) requires the training of PSI employees.** We have reached the 5-year point from when many PSI employees first took the training. This training **MUST** be repeated every 5 years as part of your employment with PSI. **We are excited to announce that PSI has developed its own online version of the mandated *Safety and Violence Prevention Training*. Launched in July, over 250 employees are utilizing this course at no cost to them. To review, this ODE-mandated training is a 4-hour training that is required of PSI employees. The training must be completed within two years of employment with PSI and repeated every five years. **You will be notified via email** when you need to take the training and will be provided information for accessing the PSI online version. As time progresses, we plan to add courses to this platform to assist our employees and our partner schools with their professional development needs.**

For further information, contact [karenmckelvey@psi-solutions.org](mailto:karenmckelvey@psi-solutions.org).

## Prevention/Intervention News

PSI has been chosen to be the Educational Partner of LifeAct® whose mission is to prevent suicide by teaching young people to recognize the warning signs of suicide and to seek professional help for themselves and others. You can register for this program that is **NO COST** to your school(s). Already this school year, the newly created PSI LifeAct staff has completed the program for over 1500 middle school students and has made several referrals after the fact, possibly saving several lives. Either share this link with your principal or ask permission to complete it on the part of your school: <https://www.surveymonkey.com/r/PSIPrevention>.

Recently, PSI has also begun serving high schools with the LifeAct program. Below is Brooke Wright, PSI LifeAct Field Supervisor, presenting to students at St. Vincent-St. Mary High School in Akron.



*Brooke Wright  
PSI LifeAct Field Supervisor  
presenting in Akron*

# from the desk of..

# Julie Wood

---

February 2017

It's hard to believe that we are more than halfway through the school year! Check out the news below for important updates relevant to our ESS Department.

## ODE's Mobile App

Stay up-to-date with the Ohio Department of Education's new mobile app for iPhone or Android users. You can now get the latest in education news, look at school report cards, and more right from your smartphones. Search for the Ohio Department of Education in your app store if you are interested.

---

## New Truancy Legislation

The 131st Ohio General Assembly passed recent legislation addressing student truancy, which will be effective starting April 6th, 2017. A summary of House Bill 410 is below:

- Changes to the state law definition of habitual truancy will be based on hours rather than days.
- Beginning July 1st, 2017, public schools will be prohibited from suspending or expelling students based solely on unexcused absences.
- Public schools will be required to update student absence policies to include intervention strategies. Absence intervention teams must be established to identify and address the underlying causes of each habitually absent student.
- School attendance officers must notify students and guardians when students are absent with or without legitimate excuse for 38 or more hours in a month or 65 hours in a year.
- House Bill 410 requires a complaint to be filed in juvenile court against a student on the 61st day after implementation of an absence intervention plan, unless the school fails to make meaningful attempts to re-engage students.
- Under the new law, schools may allow students to complete any classroom assignment missed because of suspension.
- Schools are prohibited from applying all or any remaining part of a suspension to the following school year; however, students may be required to participate in community service or alternative consequences for the number of hours equal to the time left on the suspension.

Click here for more in-depth information regarding House Bill 410:

<http://ow.ly/xmtH309esQ0>

# from the desk of...

# Julie Wood

---

February 2017

## Winter & Spring Testing Dates

The winter and spring testing season is already upon us. If you have any questions about what your role is or how to administer Ohio's State Tests, OELPA, or the OGTs, please reach out to your Field Supervisor. This year's test dates are as follows:

- English Language Arts - **March 13th - April 14th**
- Math, Science & Social Studies - **April 3rd - May 12th**
- Alternative Assessment - **February 20th - April 14th**
- Ohio English Language Proficiency Assessment - **February 6th - March 31st**
- Ohio Graduation Tests – **March 13th - March 26th**

---

**To all SLPs, just a reminder that the 2017 OSLHA Convention is  
March 30th – April 1st at the Columbus Convention Center.**

---

## Crisis Management Resources, FREE CEUs and Additional Opportunities!

- Are you interested in learning more about crisis management? If so, PSI encourages you to check out a **FREE** web-based training on *Skills for Psychological Recovery (SPR)*. SPR is an intervention that aims to help survivors gain skills to manage distress and cope with post-disaster stress and adversity. The SPR Field Operations Guide was developed by the National Child Traumatic Stress Network and the National Center for PTSD, with contributions from individuals involved in disaster research and response. SPR is not formal mental health treatment, but utilizes skills-building components from mental health treatment that have been found helpful in a variety of post-trauma situations. The goal of SPR is to teach five main skills: building problem-solving skills, promoting positive activities, managing reactions, promoting helpful thinking, and building healthy social connections.

This webinar can be found at <http://www.nctsn.org/>. Once you are on the homepage, click on the *Learning Center* blue button located in the middle of the page. You will then be taken to a page with many resources available for continuing education. Go to the *Popular* column and you will find the SPR webinar listed.

- Pre-approved CEUs are available to all Social Workers, Counselors, and Psychologists who attend The Ohio School Psychologists Association (OSPA) 2017 Spring Conference on April 26th, 27th, and/or 28th. Ethics training is available Wednesday night and the sessions on Thursday and Friday focus on Working with Challenging Students: Perspectives on Assessment, Intervention, & Counseling.
  - For more information, check out <http://ow.ly/EIxS309j7Pb>. If you are not a School Psychologist and you would like to attend OSPA, you can qualify for the Team Member Discount rate as long as you accompany an OSPA member. Many PSI employees attend this conference so please contact your Field Supervisor if you have questions about how to get in touch with a fellow OSPA member.
-

# from the desk of..

# Julie Wood

---

February 2017

## FAQ Documents

The U.S. Department of Education Office of Civil Rights recently released two FAQ documents concerning the rights of students with disabilities in public charter schools under Section 504 of the Rehabilitation Act of 1973 and under the Individuals with Disabilities Education Act. These documents are great resources to review and keep on file when questions arise. Click on the following links to view each document:

**Section 504-** <http://ow.ly/5w1a309etyl>    **Individuals with Disabilities Act -** <http://ow.ly/K2kd309etDO>

---

## Next School Year

It may seem early, but many of your schools are beginning to make plans for the 2017-2018 school year. PSI has already started to receive requests for services and changes for next year. If we hear of any changes to your school, we will let you know as soon as possible. Please let your Field Supervisor know if your school administrators would like to discuss current services or learn about additional services that PSI has to offer.

In March, look for an email from PSI asking you to indicate your tentative plans for the next school year.

Also, don't forget about PSI's Refer a Friend Program. You can earn up to \$250 for each applicant we hire as a result of your referral.

---

**You all are making a remarkable difference in your students' lives each and every day. Thanks to all of you for your passion and commitment to your students and schools!**



from the desk of...

# Mike Tornow

---

February 2017

## Becoming an Accomplished Presenter

Did you know that PSI is looking for you? Yes, you and you and even YOU! While we knew this already, *The Plain Dealer* chose PSI as one of the 2016 top employers in Northeast Ohio! This award comes from our great staff with many talents and invaluable knowledge that your school's experience on a daily basis.

As PSI continues to grow across Ohio and into many other states, we feel the best way to grow is with our employees! Whether you have implemented RTI, created a unique program, have experience with students with autism or have knowledge of and work in a school where asthma and diabetes are high....we want you to tell our partner schools about your experiences and to share your knowledge!

We will soon be scheduling cluster trainings on **"Becoming an Accomplished Presenter."** Although some of you may believe this is not within your skill set, we ask that you give it a try and come to one of the trainings to learn more about the possibilities. This is also a great way to earn additional compensation. If you are interested please contact me, Mike Tornow, [miketornow@psi-solutions.org](mailto:miketornow@psi-solutions.org)!

---

## Online Services - Netflix? Amazon Prime? VirtualPSI!

If you are like many people, you pay a monthly fee for Netflix and Amazon Prime. How would you like access to a service like VirtualPSI which is free and pays YOU back? This is a great way to practice your professional "craft," work with students, and have the flexibility to work from home! The students are the movie stars on your screen and the delivering of services is much quicker than Amazon Prime! In fact, delivering online services is very similar to working in schools; here are some advantages:

- Kids love playing games online and view online therapy as such!
- Research has shown that online therapy is just as effective as on-site!
- VirtualPSI allows for a flexible schedule and a video platform that is simple to use!
- You can work from home!

**As we plan for next school year, we are looking for additional SLPs, OTs, and ESL teachers to join our online division. If you are interested please contact your supervisor and/or reach out to Mike Tornow at:**  
**[miketornow@psi-solutions.org](mailto:miketornow@psi-solutions.org)**

***Coming Soon!***

**Online Health Services, Counseling and School Psychology Services!**

# from the desk of..

# Health Services

---

February 2017

The school year is half way through and winter is upon us...but it is downhill from here!

So far, there have been fewer snow days this year than last. Keep in mind that if your school is closed due to weather, you may use a personal day if you are entitled to one. You can also speak with your building administrator about making up the time. Using a personal day for weather related closure will not disqualify an employee from the Attendance Reward Program. Be sure to check media sources when the weather conditions are poor regarding your particular school...**PSI does not notify employees of such closures.**

By the time this issue of PSIdelines is published the PSI Health Regional Cluster meetings will be underway. These meetings were scheduled to give staff an opportunity for networking, information on concussions and the management of head injuries as well some general clinic reminders. Staff that are unable to attend one of the meetings will receive an email with instructions for completing the Heads Up Concussion training online.

---

## SAVE THE DATE

Save the date for the PSI Health Services Annual Spring Meeting on Thursday April 6, 2017. More information is to come. Watch your email!

---

## Important Reminders

Certified Diabetes Educator, Carol Meszaros continues to conduct the CDE Access Course at the PSI Office on the second Saturday of each month from 9:00-12:00. These workshops provide PSI Health Team Members the opportunity to continue to learn about the ongoing changes of diabetes management in a small group setting. Attendees are encouraged to provide questions for Carol to answer about the management of students with diabetes in their own clinics. Please call the Joan Cuthbert at the PSI Office to register (330-425-8474 ext. 226) if you are interested in taking advantage of this training as class size is limited.

If your school conducts scoliosis screening, you may wish to refresh your skills by viewing the Powerpoint accessed through the PSI Health intranet in the Resource Tools tab. Although this screening is not required by the ODH, it is recommended for students in grades 5, 6 and 7. Check with your building administrator if you are unsure whether your school conducts this screening.

If your school will be conducting kindergarten screenings this school year (for the upcoming school year) and Vision and Hearing Screenings are performed, please make sure that you have the necessary screening equipment.

RN's and LPN's are entitled to Professional Development days as outlined in the attendance policy. In order to ensure adequate coverage in your area, pre-approval is required from the Health Services Administrative Team.

Make sure to check your Time Remaining forms. If you find there is a discrepancy, contact Nancy Berlan at extension 238.

# from the desk of.. Health Services

---

February 2017

## Important Updates

Tentative Plans for the 2017-2018 school year will be going out electronically in March. Please complete the survey as soon as possible so we can best accommodate any anticipated changes.

Remember to check your psi-health email regularly. All staff are notified via email when updates are made to the Health Intranet, including the online Health Resource Guide and Commonly Used Forms. Please make sure that the hard copy of the Health Resource Guide binder in your clinics is updated also. Don't forget to update forms in your files as well. Check the Bulletin Board on the Health Intranet as well for information and updates.

*Health Staff Evaluations-* All nurses that work with other health staff must provide PSI with evaluative feedback regarding the performance of the health staff who work under their supervision. Please complete the Health Staff Evaluation Form on page 19 in the Evaluation Tools section of the Health Resource Guide and submit the form to PSI by March 1st of each school year.

*Annual Hearing Screening Summary Report-* Just a reminder that all schools are required to complete the online annual summary report by June 1, 2017. The report can be accessed on the ODH website at:  
<http://www.odh.ohio.gov/odhprograms/cfhs/hvscr/Documentation%20and%20Reporting.aspx>

*Special Needs Updates from Paula Harris-* It's not too early to start planning for the summer ESY programs in the Districts. Please make sure the expiration dates on the orders include the summer and coincide with the end date of the ESY program. If this is not possible, please call the physicians to get orders for coverage.

As your students are transferred to new schools, please take the time to meet with the new clinic nurse to share important aspects of the care of the student to provide a smooth transition in the new school year.

---

## Legislative Updates

### *Sub. H.B. 113- CPR and AED Instruction and Staff Training*

Beginning with the 2017-2018 school year, all students in grades 9-12 attending public schools must receive instruction in Cardiopulmonary Resuscitation (CPR) and the use of an Automated External Defibrillator (AED) before graduating from high school.

Requires each school district and community school to provide training in the use of an AED to each person employed by that district or school, by July 1, 2018, and once every five years thereafter.

Call PSI*Certify* via Meredith Sitko at the PSI office to help your school meet this requirement!

# from the desk of.. Health Services

February 2017

## Legislative Updates Continued...

### *Sub. S.B. 319- NALOXONE Access and Administration*

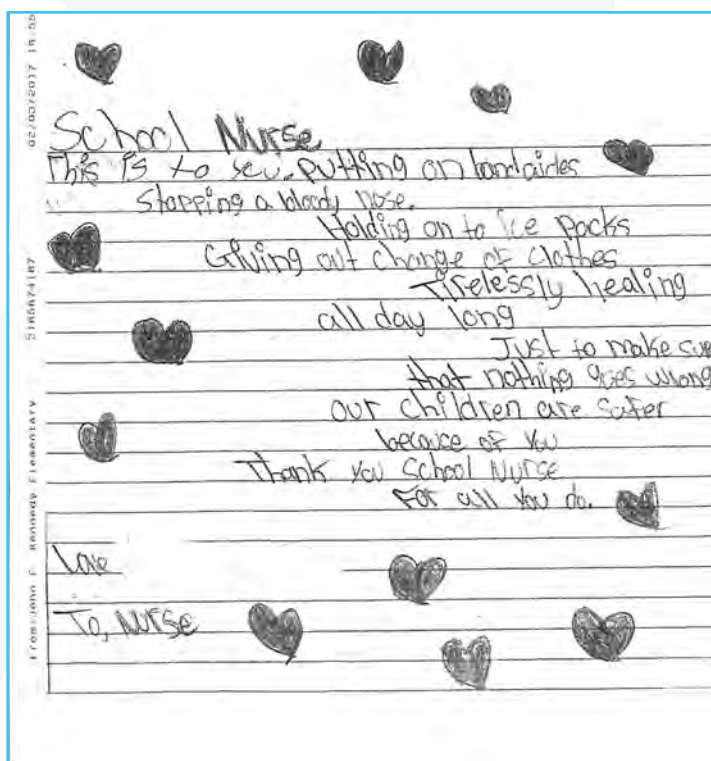
Permits naloxone to be available for administration at locations that serve individuals who may be at risk of experiencing an opioid-related overdose. The bill includes the following as service entities: a college or university, school, local health department, community addiction services provider, court, probation department, halfway house, prison, jail, community residential center, homeless shelter, or similar entity.

To be eligible to authorize naloxone administration, a physician or board of health must establish a written protocol for administering naloxone.

The protocol must include the following:

- (1) A description of the clinical pharmacology of naloxone;
- (2) Precautions and contraindications concerning the administration of naloxone;
- (3) Any limitations concerning the individuals to whom naloxone may be administered;
- (4) The naloxone dosage that may be administered and any variation in the dosage based on circumstances specified in the protocol;
- (5) Labeling, storage, record-keeping, and administrative requirements;
- (6) Training requirements that must be met before an individual can be authorized to administer naloxone.

The bill will take effect in April 2017. Additional information will be provided as it becomes available



We value our employees and all they do in the schools we serve. It is always nice to hear from the students and how our staff can make them feel better. To the left is a letter that one of our Health Staff received in Maple Heights.



# from the desk of...

# Health Services

---

February 2017

## \*Medication Administration Reminder\*

The Six Rights of Medication Administration are the standard safety procedures that must be followed by all people who administer medications. When the procedure is followed, the opportunity for a medication administration error is significantly reduced. The procedure includes checking the “six rights” of medication administration, each time medication is administered.

- Right Student
- Right Medication
- Right Dose
- Right Time
- Right Route
- Right Documentation

Refer to the Medication Administration Section of the PSI Health Resource Guide and PSI Health Intranet for additional detailed information. If ever in doubt about a student’s medication order or care plan, STOP, contact your Regional RN Supervisor or the PSI Health Office.

---

Margaret Lorenz from Painesville is retiring in February. Margaret received her R.N. License in 1973 and has been a wonderful employee with PSI for 35 years, including 26 years at Andrews Osborne Academy. We wish Margaret all the best in her retirement. She will be missed.

**See You At The Spring Meeting!**  
**The PSI Health Services Team**